

Residential Experience

Project:

24 West Overcliff Drive

Location:

Bournemouth

Client:

Sandpalm Properties Limited

Completion:

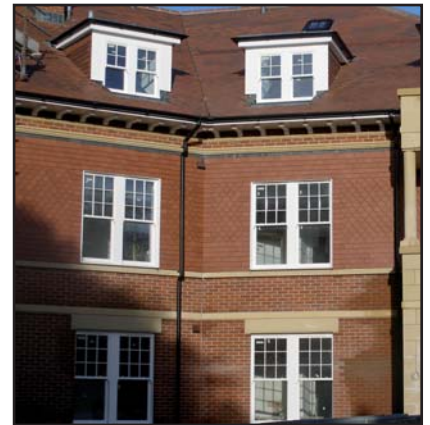
Early 2009

Construction Cost:

c.£2,500,000

Form of Contract:

JCT Design and Build Contract
2005 Edition



Roles & Responsibilities:

P H Warr plc was appointed to provide Employer's Agent and Quantity Surveying services.

Scheme:

The scheme comprised the design and construction of 13 self contained apartments with basement car parking. Works included asbestos removal, demolition, site clearance, external works, drainage, mains services and landscaping.

CHARTERED QUANTITY SURVEYORS

CHARTERED BUILDING SURVEYORS

HEALTH AND SAFETY ADVISORS

ENVIRONMENTAL SURVEYORS

BESPOKE & SPECIALIST SERVICES



PH Warr plc
Property & Construction Surveyors