

## Residential Experience

### Project:

Studland Dene

### Location:

Alum Chine, Bournemouth

### Client:

National Westminster Bank Plc

### Completion:

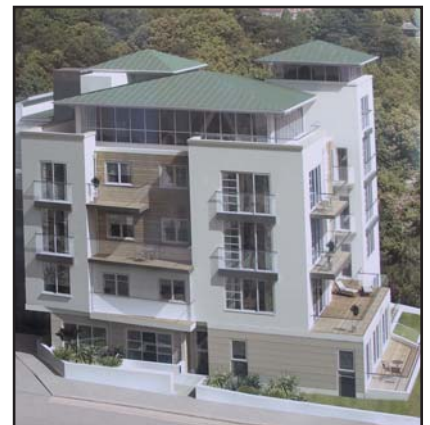
Summer 2009

### Construction Cost:

c.£4,300,000

### Form of Contract:

In-house development agreement



### Roles & Responsibilities:

P H Warr plc is providing Monitoring Surveying services on behalf of NatWest. This involves the preparation of an initial report, monthly site visits to identify any potential risks to the project, valuations and loan drawdown throughout the project duration.

### Scheme:

The scheme comprises the design and construction of a 4/5 storey block containing 16 holiday apartments, 14 flats and a restaurant with basement parking. This involves the demolition of an existing hotel, hard and soft landscaping and all associated external works.

This Brightwater Projects development includes a glass atrium lobby and is of an outstanding architectural design, overlooking Alum Chine beach.

#### CHARTERED QUANTITY SURVEYORS

CHARTERED BUILDING SURVEYORS

HEALTH AND SAFETY ADVISORS

ENVIRONMENTAL SURVEYORS

BESPOKE & SPECIALIST SERVICES



**PH Warr plc**  
*Property & Construction Surveyors*