

## Residential Experience

### Project:

39-41 Boscombe Spa Road,  
Phases 1, 2 and 3

### Location:

Bournemouth, Dorset

### Client:

Blue Homes

### Completed:

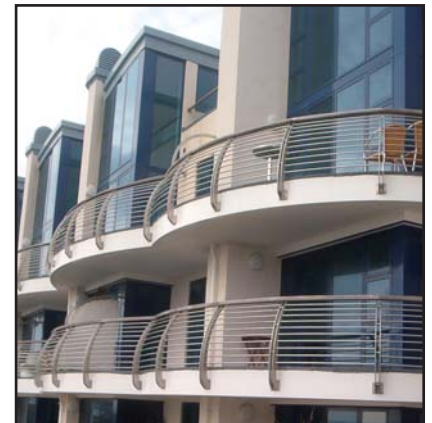
July 2006

### Construction Cost:

c.£3,000,000

### Form of Contract:

Standard Form of Building  
Contract 'With Contractor's  
Design' 1998 Edition



### Roles & Responsibilities:

The company provided a multi-disciplinary service which included Employer's Agent, Party Wall Surveying, CDM Planning Supervision and Asbestos Risk Management.

### Scheme:

The development overall comprised of the design and construction of 14 apartments, 4 town houses and 3 dwellings including all associated demolition, site clearance, external works, landscaping, drainage and mains services in 3 phases.

**blue** HOMES

CHARTERED QUANTITY SURVEYORS  
CHARTERED BUILDING SURVEYORS  
HEALTH AND SAFETY ADVISORS  
ENVIRONMENTAL MANAGEMENT ADVISORS  
BESPOKE & SPECIALIST SERVICES



**PH Warr plc**  
Property & Construction Surveyors